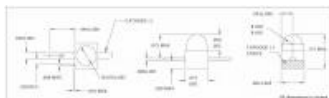




## Products

### LEDs

CML IT is a world leader in the manufacturing of LEDs and LED assemblies. CML offers a wide variety of products utilizing LEDs as a light source. Our line of discrete LEDs consists of both through hole and SMT products in all of the standard industry sizes including 3mm, 5mm, 0603, 0805, 1206, PLCC and any others. All CML-IT LEDs are available off-the-shelf in a wide variety of colors and intensities. Binning for through LEDs is one competitive service of CML Innovative Technologies, please contact us.



**Part Number:** 4307T3

**Serial Number:** 4307T

**LED Type:** THRU HOLE

**Industry Size:** Subminiature

**Metric Size:** 1.65 mm

**Output Color:** AMBER

**Epoxy:** AMBER DIFFUSED

**Peak Wave length (mA):** 603

**Minimum MCD:** 1.0

**Typical MCD:** 8.0

**Forward Volt (Typical):** 1.9

**Forward Volt (Max):** 3.0

**Rate Current (mA):** 10

**Viewing Angle (°):** 90

**Operating Temperature:** -0.55

**Storage Temperature:** -0.55

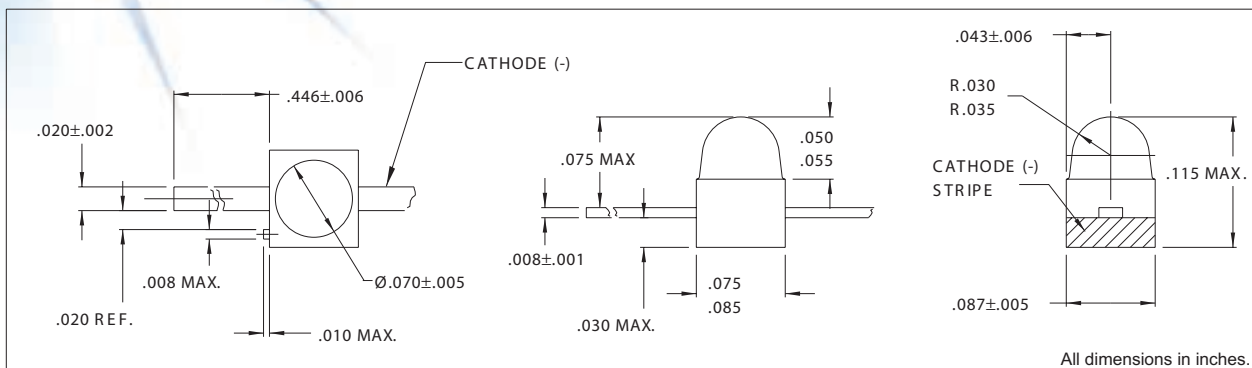
**Power Dissipation:** 135

**Cont Forward Current Max:** 30

**RoHS Status:** Yes

**4307T Series Solid State LED Lamps-Sub Miniature 1.65mm**

**DESCRIPTION AND FEATURES**



Sub-Miniature High Brite LEDs 5mcd (red)

- High intensity light output.
- Low profile package.
- Wide viewing angle.
- Diffused epoxy lens provides high on-off contrast ratio.

**ELECTRO-OPTICAL CHARACTERISTICS AND RATINGS**

PART NUMBER	4307T1	4307T3	4307T5	4307T7
Output Color	Red	Amber	Green	Yellow
Diffusion	Diffused	Diffused	Diffused	Diffused
Package Color	Red	Amber	Green	Yellow
Rated Current (mA)	10	10	10	10
Forward Voltage Typ. (V)	2.2	2.2	2.3	2.2
Forward Voltage Max. (V)	3.0	3.0	3.0	3.0
Luminous Intensity Min. (mcd)	1.0	1.0	1.0	1.0
Luminous Intensity Typ. (mcd)	5.0	3.0	4.0	3.8
Capacitance @ V=0 (pF)	11	4	18	15
Peak Wavelength (nm)	635	603	565	583
Viewing Angle 2θ 1/2 (degrees)	80	90	70	90
Power Dissipation (mW)	120	135	120	120
Continuous Forward Current Max. (mA)	30	30	30	20
Reverse Breakdown Voltage Min. (V)	5	5	5	5
Peak Forward Current Max. (1ms-300pps) (A)	.06	.09	.06	.06